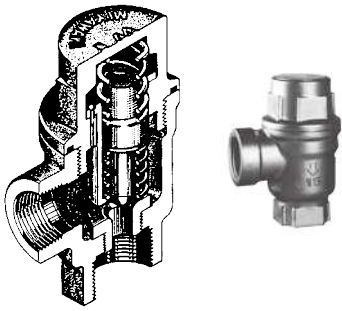
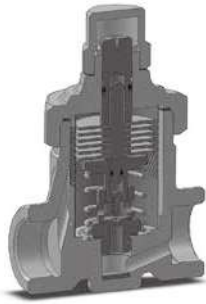


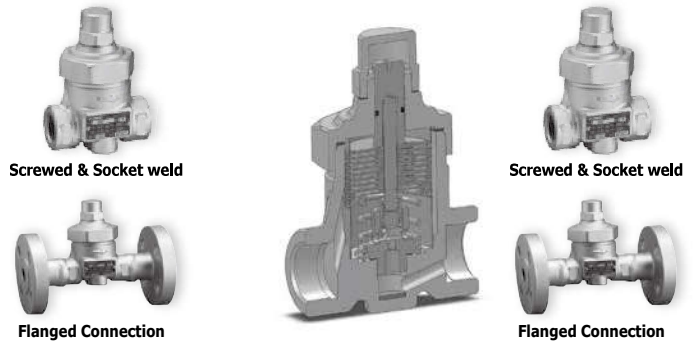
# AW2



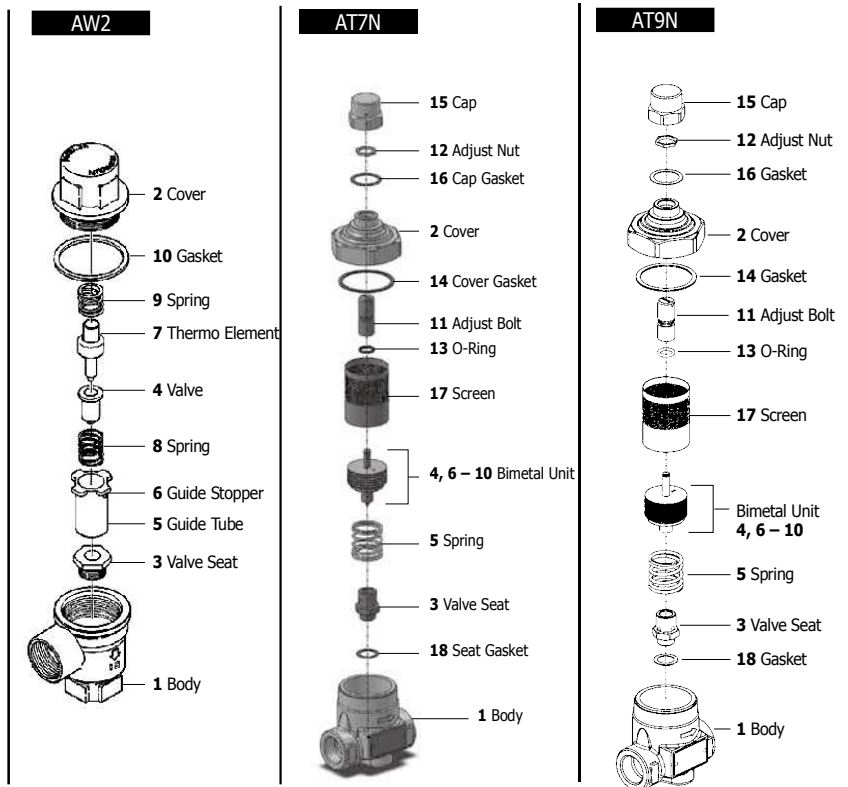
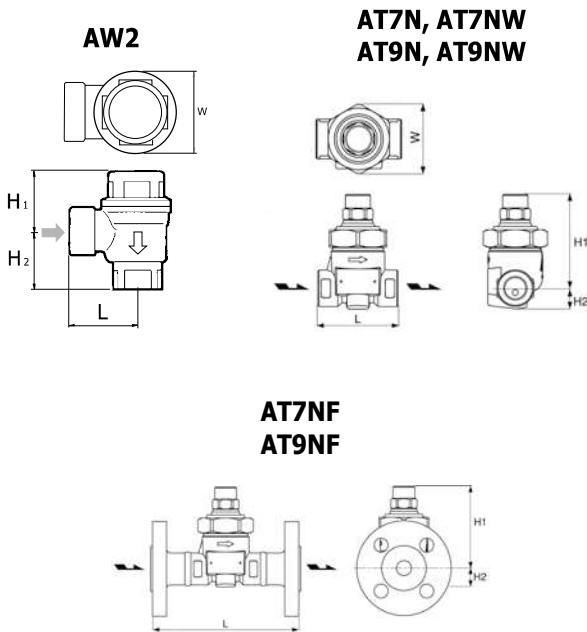
# AT7N



# AT9N



## Dimensions

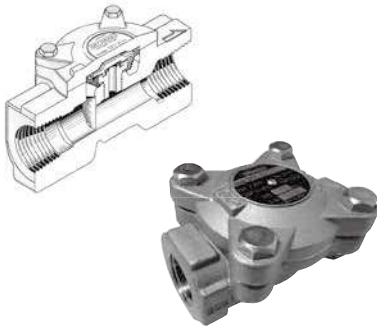


Model	Connections	Size	Max. Operating Pressure		Max. Operating Temperature		Dimensions (mm)				Dimensions (in)				Body Material	Weight	
			MPa	psig	°C	°F	L	H1	H2	W	L	H1	H2	W		kg	lb
AW2-5	Screwed Rc, NPT	1/2"	0,5	73	160	320	35	42	35	41	1.4	1.7	1.4	1.6	Brass C3771	0,4	1.0
		3/4"					41	41	1.6	1.6	0,5	1.1					
		1"					41	41	1.6	1.6	0,5	1.1					
AT7N	Screwed Rc, NPT	1/2"	2,1	305	350	662	70	82	18	56	2.75	3.2	0.7	2.2	Forged Steel A105	0,9	2.0
		3/4"					19	23	0.75	0.9	1,0	2.2					
		1"					23	23	0.9	0.9	1,1	2.4					
AT7NW	Socket Weld JIS, ASME, DIN	1/2"	2,1	305	350	662	70	82	18	56	2.75	3.2	0.7	2.2	Forged Steel A105	0,9	2.0
		3/4"					19	23	0.75	0.9	1,0	2.2					
		1"					23	23	0.9	0.9	1,1	2.4					
AT7NF	Flanged JIS, ASME, DIN	1/2"	2,1	305	350	662	145*	82	18	56	5.7*	3.2	0.7	2.2	Forged Steel A105	2,6	5.7
		3/4"					19	23	0.75	0.9	3,4	7.5					
		1"					23	23	0.9	0.9	4,0	8.8					
AT9N	Screwed Rc, NPT	1/2"	1,6	230	350	662	70	82	18	56	2.75	3.2	0.7	2.2	Forged Steel A105	0,9	2.0
		3/4"					19	23	0.75	0.9	1,0	2.2					
		1"					23	23	0.9	0.9	1,1	2.4					
AT9NW	Socket Weld JIS, ASME, DIN	1/2"	1,6	230	350	662	70	82	18	56	2.75	3.2	0.7	2.2	Forged Steel A105	0,9	2.0
		3/4"					19	23	0.75	0.9	1,0	2.2					
		1"					23	23	0.9	0.9	1,1	2.4					
AT9NF	Flanged JIS, ASME, DIN	1/2"	1,6	230	350	662	145*	82	18	56	5.7*	3.2	0.7	2.2	Forged Steel A105	2,6	5.7
		3/4"					19	23	0.75	0.9	3,4	7.5					
		1"					23	23	0.9	0.9	4,0	8.8					

\*On request also available with different face-to-face length

# ADC1

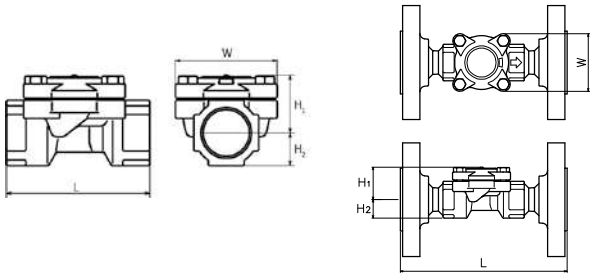
# ADL1



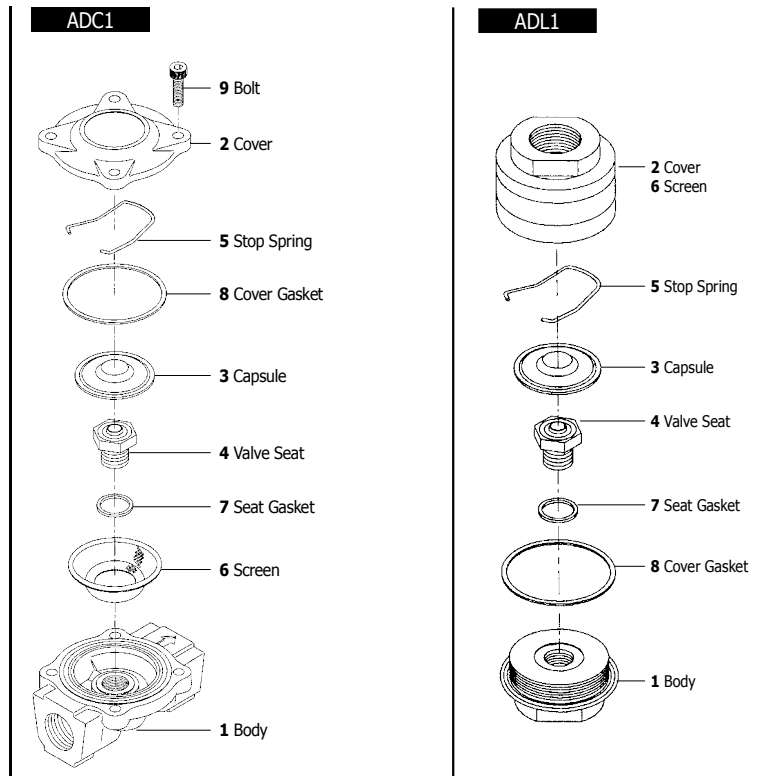
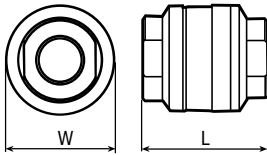
## Dimensions

### ADC1

### ADC1-F

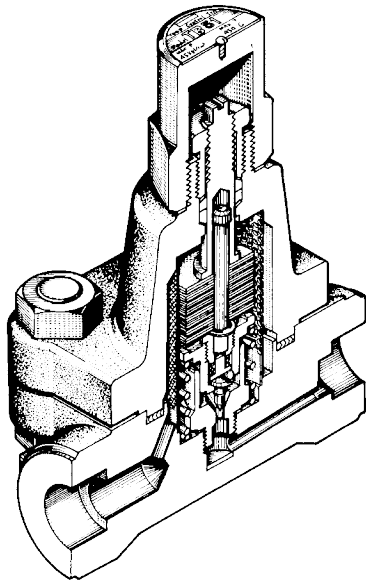


### ADL1



Model	Connections	Size	Max. Operating Pressure		Max. Operating Temperature		Dimensions (mm)				Dimensions (in)				Body Material	Weight	
			MPa	psig	°C	°F	L	H1	H2	W	L	H1	H2	W		kg	lb
<b>ADC1-21H</b> <b>ADC1-21L</b>	Screwed Rc, NPT	1/4", 3/8"	2,1	305	220	428	65	29	11	53	2.6	1.1	0.4	2.1	Stainless Steel SCS13A	0,4	0.9
		1/2", 3/4"					75	31	17		3.0	1.2	0.7			0,5	1.1
1"	80	34					21	3.1	1.3		0.8	1,3	2.9				
<b>ADC1-21HF</b> <b>ADC1-21LF</b>	Flanged JIS, ASME, DIN	1/2"					150	31	17		5.9	1.2	0.7			2,2	4.9
		3/4"					160	34	21		6.3	1.3	0.8			3,1	6.8
<b>ADL1-21H</b> <b>ADL1-21L</b>	Screwed Rc, NPT	1/4"	2,1	305	220	428	60	48	2.4	1.9	Stainless Steel SCS13	0,7	1.5				
		3/8"															
		1/2"															
		3/4"															
<b>ADL1-10C</b>	Screwed Rc, NPT	1"	1,0	145	220	428	60	48	2.4	1.9	Stainless Steel SCS13	0,7	1.5				
		1/4"															
		3/8"															
		1/2"															

# AT51

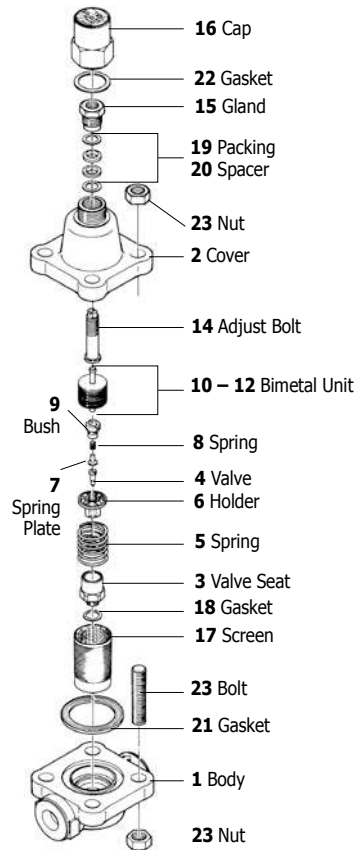


**Screwed & Socket Weld**



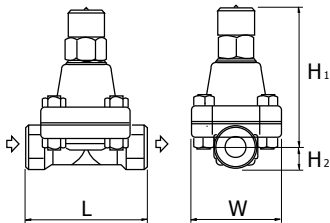
**Flanged**

**AT51**

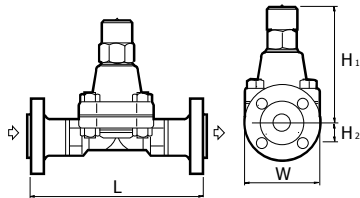


**Dimensions**

**AT51 / AT51W**



**AT51F**



**Table 1: Face-to-face dimensions / weights**

Model	Size (in)	ASME 600 lb				DIN PN63 / PN100				JIS 63 K / ASME 900 lb			
		mm	in	kg	lb	mm	in	kg	lb	mm	in	kg	lb
<b>AT51F</b>	1/2"	200	7.9	7,3	16.1	210	8.3	9,4	20.7	220	8.7	9,6	21.2
	3/4"	210	8.3	8,5	18.7	230	9.1	11,4	25.1	230	9.1	11,1	24.5
	1"	240	9.4	9,6	21.2	230	9.1	12,5	27.6	240	9.4	12,1	26.7

Model	Connections	Size	Max. Operating Pressure		Max. Operating Temperature		Dimensions (mm)				Dimensions (in)				Body Material	Weight	
			MPa	psig	°C	°F	L	H <sub>1</sub>	H <sub>2</sub>	W	L	H <sub>1</sub>	H <sub>2</sub>	W		kg	lb
<b>AT51</b>	Screwed Rc, NPT	1/2" - 1"	4,5	653	425	800	130	155	25	100	5.1	6.1	1.0	3.9	Forged Steel A105	5,7	12.6
			6,5	943													
<b>AT51W</b>	Socket Weld JIS, ASME, DIN	1/2" - 1"	4,5	653													
			6,5	943													
<b>AT51F</b>	Flanged JIS, ASME, DIN	1/2" - 1"	4,5	653													
			6,5	943													